

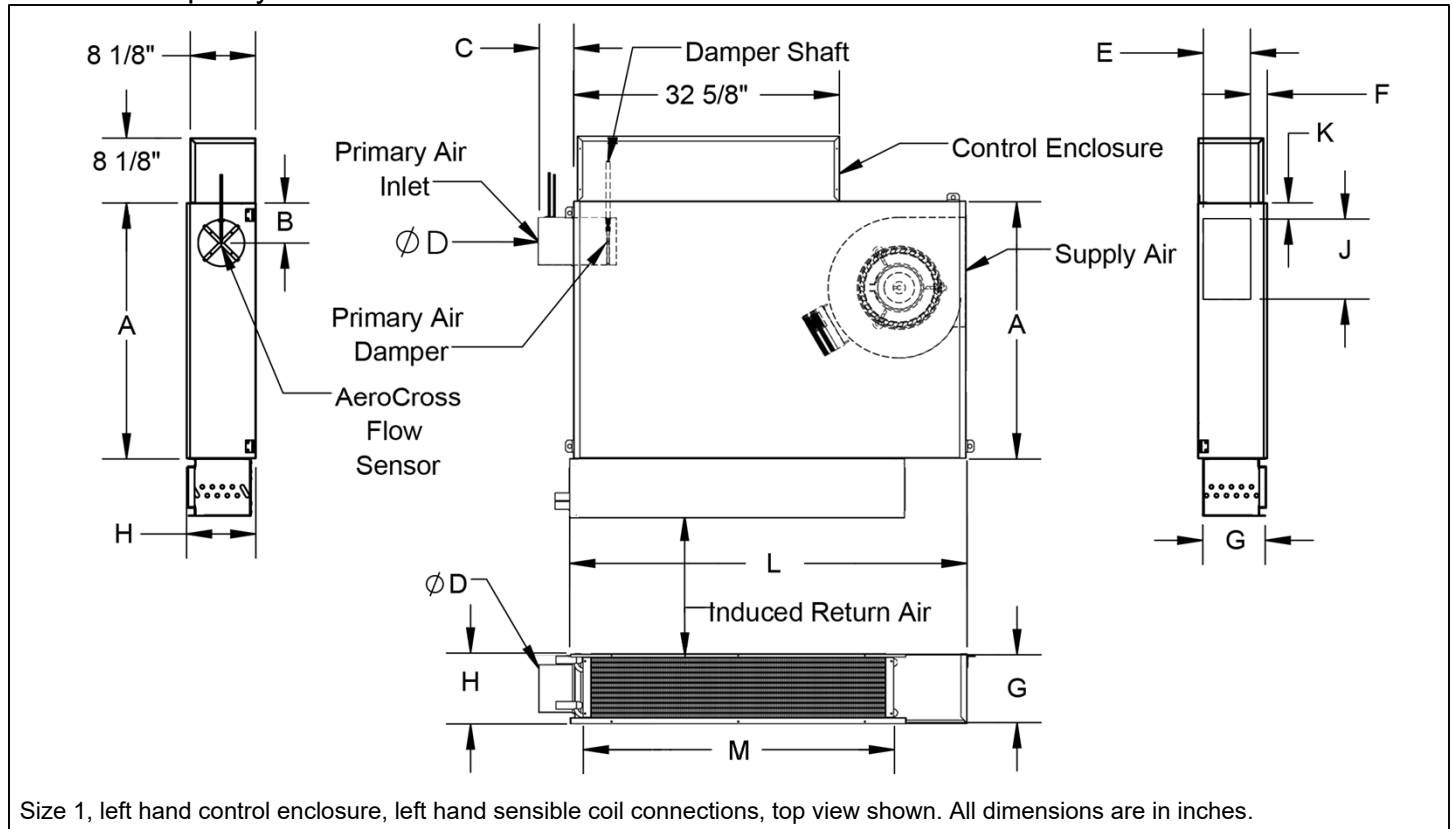
DLSC

Fan Powered Terminal, Series Flow, Sensible Cooling Coil
 Direct Digital Control, Pressure Independent

General Description

- Low Profile sizes for applications with shallow ceiling plenums.
- Pressure independent primary air flow control.
- Casing manufactured of 20 gauge G40 galvanized steel.
- Standard internal liner, ½ EcoShield Matted faced for resistance to air erosion. Contains no harmful irritants or chemicals with EPA registered antimicrobial inhibitor and meets requirements of NFPA 90A and UL 181.
- Ultra High efficiency ECM brushless DC motor with microprocessor based controller.
- DWDI direct driven centrifugal blowers
- Fan Airflow controlled by a Manual or Remote PWM speed controller.
- Titus AeroCross multipoint center averaging inlet velocity sensor with +/- 5% accuracy across the complete airflow range.
- Round damper with metal shaft rotating in Delrin self-lubricating bearings.
- Primary air flow balancing connections for CFM measurement.
- Single point electrical connections.
- Discharge opening is designed for flanged duct connections.
- Drip Pan.
- High Efficiency SENSIBLE Cooling and booster Heating coils factory installed on Induced air inlet.
- Removable Bottom Access panel for easy service/maintenance.
- UL Class2 control transformer 24V secondary voltage.
- ETL Certified

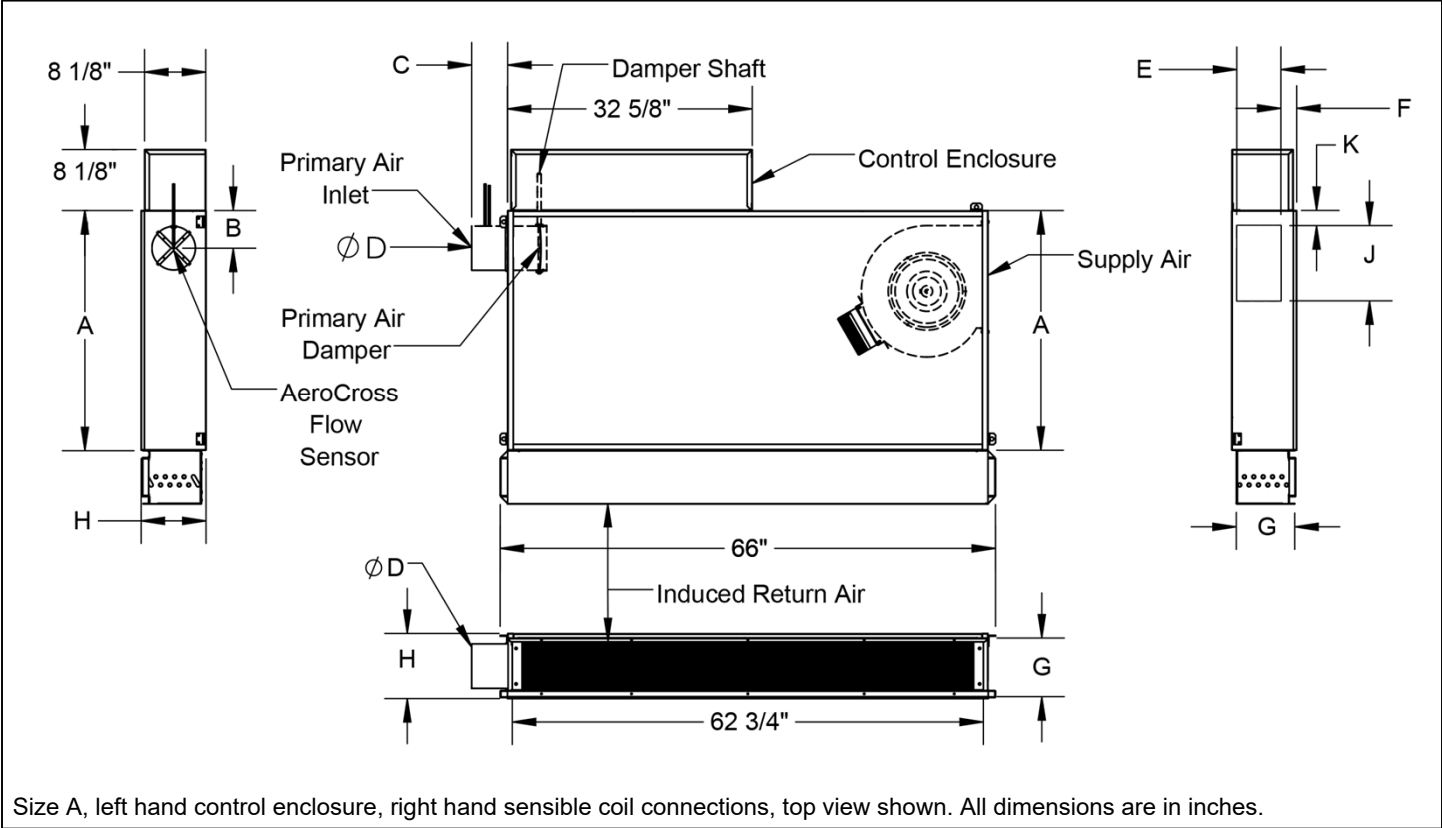
Standard Capacity Unit Sizes



Unit Size	A	E	F	G	H	J	K	L	M
1	32	5 7/8	2 1/8	7 3/4	8 5/8	10	2	48 1/8	38 3/4
2			3	8 1/2	9 1/2				
3	26	6 7/8	2 1/8	9 3/4	11	9	2 1/4	40 1/8	
5	35	10 7/8	3 1/4	13 1/2	17	10	6 1/4	46 1/8	44 3/4

Inlet Size	B	C	D
4	5	6 7/8	3 7/8
5			4 7/8
6	6	4 3/4	5 7/8
8			7 7/8
10			9 7/8
12	8	6 3/4	11 7/8
14	10		13 7/8

High Capacity Unit Sizes



Unit Size	A	E	F	G	H	J	K
A	32	5 7/8	2 1/8	7 3/4	8 5/8	10	2
B			3	8 1/2	9 1/2		
C	26	6 7/8	2 1/8	9 3/4	11	9	2 1/4
E	35	10 7/8	3 1/4	13 1/2	17	10	6 1/4

Inlet Size	B	C	D
4	5	6 7/8	3 7/8
5			4 7/8
6			5 7/8
8	6	4 3/4	7 7/8
10	7	6 3/4	9 7/8
12	8		11 7/8
14	10		13 7/8

Basic Unit Configuration

Unit Handing

- Right Hand Control Enclosure
- Left Hand Control Enclosure

Sensible Coil Handing

- Inlet Side Sensible Coil Conn.
- Discharge Side Sensible Coil Conn.

Sensible Coil Configuration

- 2-Pipe 2 Row
- 2-Pipe 3 Row
- 2-Pipe 4 Row
- 2-Pipe 5 Row
- 2-Pipe 6 Row
- 2-Pipe 7 Row
- 2-Pipe 8 Row
- 4-Pipe 2 Row Cooling, 1 Row Heating
- 4-Pipe 4 Row Cooling, 1 Row Heating
- 4-Pipe 6 Row Cooling, 1 Row Heating

Unit Size

- Unit Size 1
- Unit Size 2
- Unit Size 3
- Unit Size 5
- Unit Size A
- Unit Size B
- Unit Size C
- Unit Size E

Primary Air Inlet Size

- 4" Round Inlet
- 6" Round Inlet
- 8" Round Inlet¹
- 10" Round Inlet²
- 12" Round Inlet³
- 14" Round Inlet³

Motor Voltage

- ECM Motor 120V/1Ph/60Hz
- ECM Motor 208V/240V/1Ph/60Hz
- ECM Motor 277V/1Ph/60Hz

Motor Control

- Manual PWM ECM Motor C'trl
- Remote PWM ECM Motor C'trl

Notes:
 1) Available only on unit sizes 2, 3, 5, B, C, & E
 2) Available only on unit sizes 3, 5, C, & E
 3) Available only on unit sizes 5 & E

Liner Type

- 1/2" EcoShield Liner (Matte)
- 1/2" EcoShield Liner Foil Faced
- 1" EcoShield Liner
- 1" EcoShield Foil Faced
- 1/2" Fiberglass
- 1/2" Fiberglass Foil Faced
- 1" Fiberglass
- 1" Fiberglass Foil Faced
- 1/2" Fiber Free
- 3/8" Fiber Free
- 1" Fiber Free
- 1/2" UltraLoc
- 1/2" UltraLoc EcoShield
- 1/2" UltraLoc Foil Faced EcoShield Perforated inner liner
- 1/2" UltraLoc Foil Faced Perforated inner liner
- 1" UltraLoc
- 1" UltraLoc EcoShield
- 1" UltraLoc Foil Faced EcoShield Perforated inner liner
- 1" UltraLoc Foil Faced Perforated inner liner
- 1" SteriLoc
- No liner

ECM Motor Ratings

Unit Size	Motor HP	277/1/60	240/1/60	208/1/60	120/1/60
1	1/3	2.6	2.8	3.3	5.0
2	1/3	2.6	2.8	3.3	5.0
3	1/2	4.1	4.3	5.0	7.7
5	3/4	5.5	6.8	7.9	9.6

Unit Size	Motor HP	277/1/60	240/1/60	208/1/60	120/1/60
A	1/3	2.6	2.8	3.3	5.0
B	1/3	2.6	2.8	3.3	5.0
C	1/2	4.1	4.3	5.0	7.7
E	3/4	5.5	6.8	7.9	9.6

All fan motors are single phase, same voltage as electric coil (when supplied), with exception that 277 V motors are used with 480V, 3 phase coils (4 wire wye).

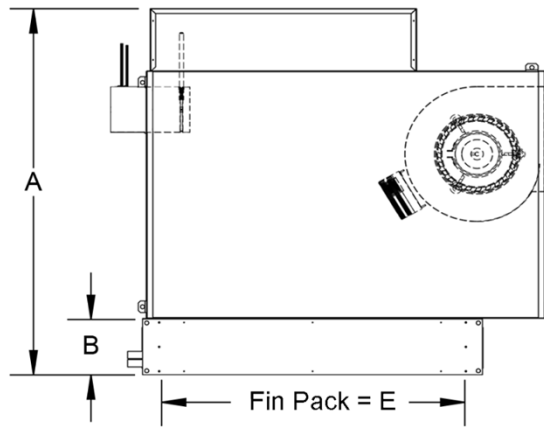
Optional Accessories Check if provided.

- Slip & Drive Discharge Connections
- Hanger Brackets
- Camlock Access Panels
- Motor Fuses
- Metal Control Enclosure
- Induced Air Sensor

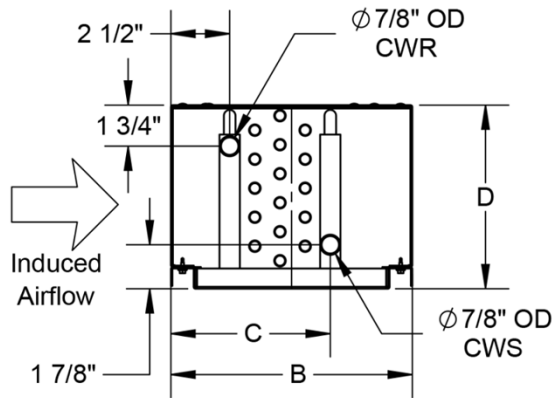
Control Accessories

- FMA controls
- Controller _____
- Damper Actuator _____
- Dust Tight Control Enclosure (Chicago Code)
- Dust Tight Disconnect SW (Chicago Code)
- Remote User Disconnect (Chicago Code)
- Disconnect Switch-NonFused

Standard Capacity Sensible Coil Dimensions

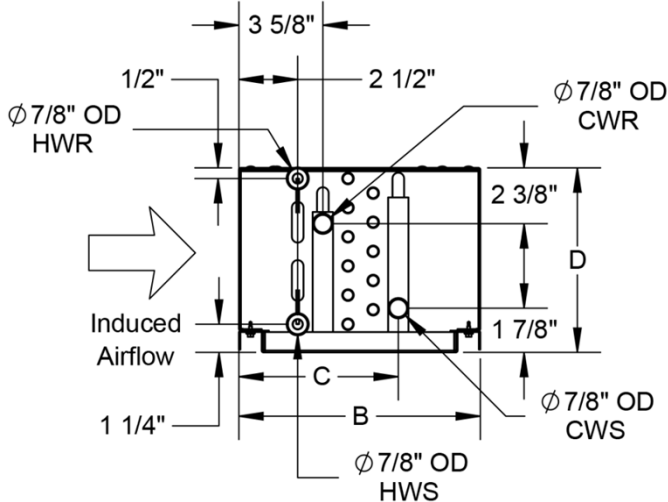


2-Pipe Coil Details



Size 1, 5 Row Cooling Shown

4-Pipe Coil Details

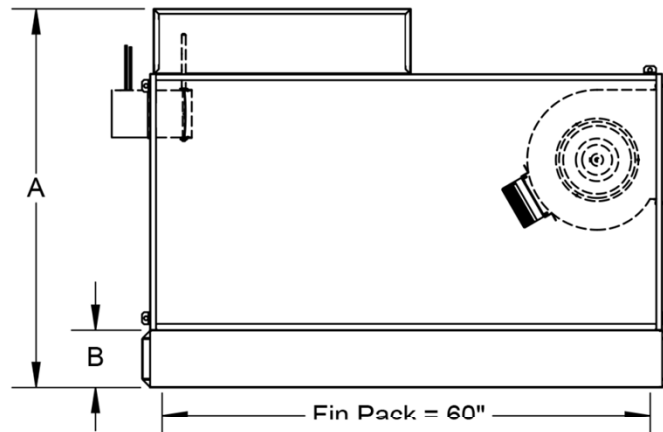


Size 1, 4 Row Cooling, 1 Row Heating Shown

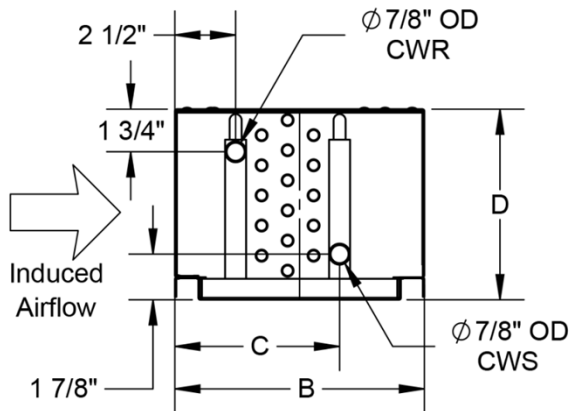
Unit Size	Coil Rows	A	B	C	D	E
1	2	47 1/4	7 1/8	3 1/4	7 3/4	36
	3	48 1/4	8 1/4	4 3/4		
	4	49 1/2	9 1/4	5 1/2		
	5	50 1/2	10 3/8	6 7/8		
	6	51 5/8	11 1/2	7 7/8		
	7	52 1/2	12 1/2	9 1/8		
	8	53 6/8	13 5/8	9 7/8		
2	2	47 1/4	7 1/8	3 1/4	8 1/2	36
	3	48 3/8	8 1/4	4 3/4		
	4	49 3/8	9 1/4	5 1/2		
	5	50 1/2	10 3/8	6 7/8		
	6	51 5/8	11 1/2	7 7/8		
	7	52 5/8	12 1/2	9 1/8		
	8	53 3/4	13 5/8	9 7/8		
3	2	41 1/4	7 1/8	3 1/4	9 3/4	36
	3	42 3/8	8 1/4	4 3/4		
	4	43 3/8	9 1/4	5 1/2		
	5	44 1/2	10 3/8	6 7/8		
	6	45 5/8	11 1/2	7 7/8		
	7	46 5/8	12 1/2	9 1/8		
	8	47 3/4	13 5/8	9 7/8		
5	2	51 1/8	7 1/8	3 1/4	13 1/2	42
	3	52 1/4	8 1/4	4 3/4		
	4	53 1/4	9 1/4	5 1/2		
	5	54 3/8	10 3/8	6 7/8		
	6	55 1/2	11 1/2	7 7/8		
	7	56 1/2	12 1/2	9 1/8		
	8	57 5/8	13 5/8	9 7/8		

This submittal is meant to demonstrate general dimensions of this product. The drawings are not meant to detail every aspect of the product. Drawings are not to scale. Titus reserves the right to make changes without written notice.

High Capacity Sensible Coil Dimensions

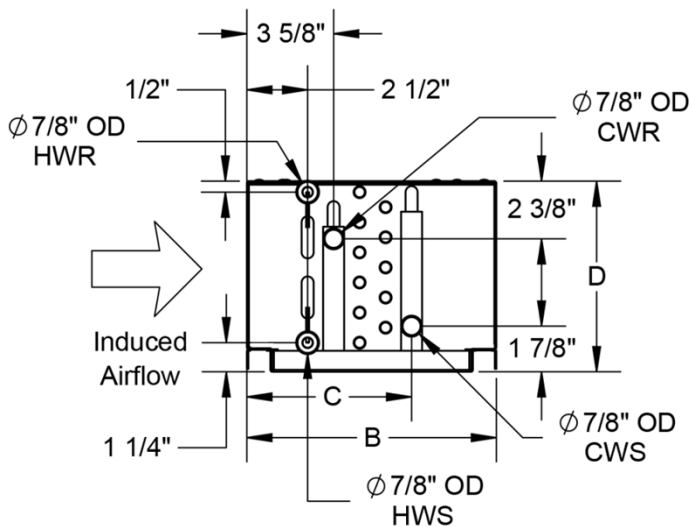


2-Pipe Coil Details



Size A, 5 Row Cooling Shown

4-Pipe Coil Details



Size A, 4 Row Cooling, 1 Row Heating Shown

Unit Size	Coil Rows	A	B	C	D
A	2	47 1/4	7 1/8	3 1/4	7 3/4
	3	48 1/4	8 1/4	4 3/4	
	4	49 1/2	9 1/4	5 1/2	
	5	50 1/2	10 3/8	6 7/8	
	6	51 5/8	11 1/2	7 7/8	
	7	52 1/2	12 1/2	9 1/8	
	8	53 6/8	13 5/8	9 7/8	
	B	2	47 1/4	7 1/8	
3		48 3/8	8 1/4	4 3/4	
4		49 3/8	9 1/4	5 1/2	
5		50 1/2	10 3/8	6 7/8	
6		51 5/8	11 1/2	7 7/8	
7		52 5/8	12 1/2	9 1/8	
8		53 3/4	13 5/8	9 7/8	
C		2	41 1/4	7 1/8	3 1/4
	3	42 3/8	8 1/4	4 3/4	
	4	43 3/8	9 1/4	5 1/2	
	5	44 1/2	10 3/8	6 7/8	
	6	45 5/8	11 1/2	7 7/8	
	7	46 5/8	12 1/2	9 1/8	
	8	47 3/4	13 5/8	9 7/8	
	E	2	51 1/8	7 1/8	3 1/4
3		52 1/4	8 1/4	4 3/4	
4		53 1/4	9 1/4	5 1/2	
5		54 3/8	10 3/8	6 7/8	
6		55 1/2	11 1/2	7 7/8	
7		56 1/2	12 1/2	9 1/8	
8		57 5/8	13 5/8	9 7/8	

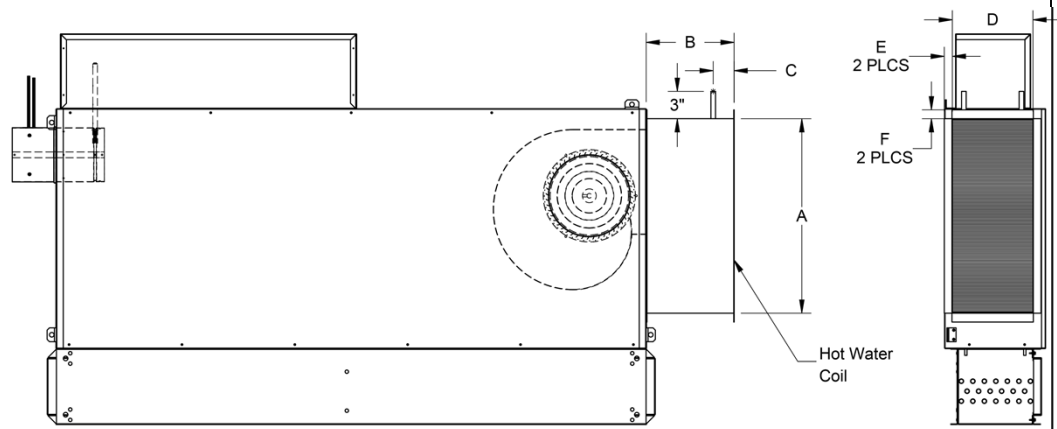
This submittal is meant to demonstrate general dimensions of this product. The drawings are not meant to detail every aspect of the product. Drawings are not to scale. Titus reserves the right to make changes without written notice.

Accessories (Optional)

Hot Water Coil Section

- 1/2" copper tubes
- Aluminum ripple fins, 10 per inch
- Connections: Male solder, 5/8" for both 1-row and 2-row. Left hand or right hand connections.
- Galvanized steel casing
- Flanged duct connection.
- Coil is installed on discharge of unit.

- 1 Row Right Hand
 2 Row Left Hand



Unit Size	Coil Rows	A	B	C	D	E	F
1 & A	1 Row	20 1/2	9 1/2	2 5/8	6 5/8	1/2*	3/4
	2 Row						
2 & B	1 Row	20 1/2	9 1/2	2 5/8	6 5/8	1/2*	3/4
	2 Row						
3 & C	1 Row	21 1/8	9 1/2	1 1/2	8 5/8	7/8	1
	2 Row						
5 & E	1 Row	22	8	1 9/16	15	1/2	1
	2 Row		9 3/16	2 1/8			

Note: Image depicts top and bottom coil flanges formed outward. For sizes 1, 2, A & B coil top and bottom flanges are formed inward.

Electric Coil Section

Optional Lynergy Controlled Electric Heater

Standard Features

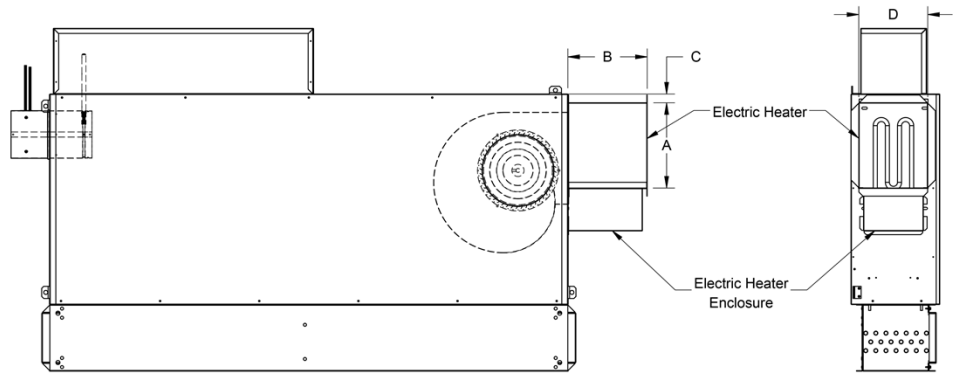
- Single side access to low voltage, high voltage, and electric heater controls.
- Automatic reset thermal cutouts, one per element
- Single point electrical connection for entire unit
- Positive pressure flow switch
- Flanged duct connection
- Coil is installed at discharge of unit.
- Transformer

Options

- Fuse Block
 Disconnect switch, door interlock type
 Manual reset cutout
 Dust tight construction
 Mercury contactors

Supply Voltage

- 208V, 1 ph, 60Hz
 240V, 1 ph, 60Hz
 277V, 1 ph, 60Hz
 208V, 3 ph, 60Hz
 480V, 3 ph, 60Hz (4 wire wye only)



Unit Size	A	B	C	D
1 & A	10 1/2	10 1/2	1 1/8	7 3/4
2 & B	10 1/2	10 3/8	2 1/8	7 7/8
3 & C	10 1/2	9 5/8	1 1/8	8 1/2
5 & E	14 1/2	9 3/4	6 1/4	13

Note: Duct connection for sizes 1, 2, A & B are slip and drive. Duct connection for sizes 3, 5, C & E are 1"

NOTE: Units with electric discharge heaters cannot have induction water coils with discharge side connections in order to prevent interference at installation.

Accessories (Optional)

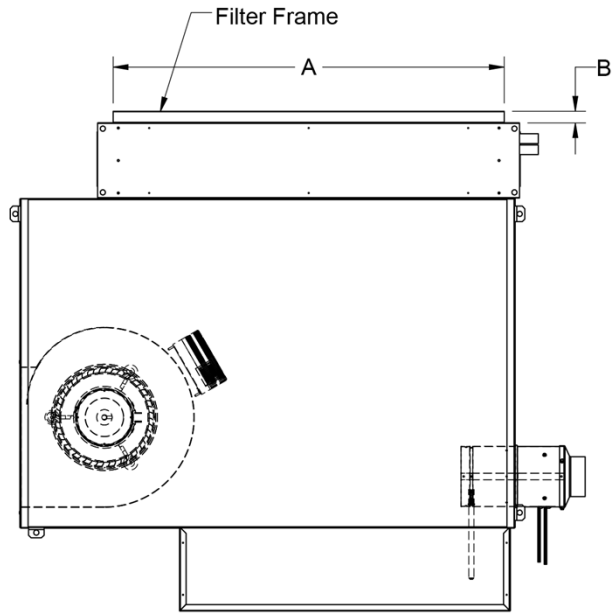
Filter Rack & Filters

1" Pleated Filter – MERV 8

2" Pleated Filter – MERV 13

UNIT SIZE	A
1, 2, 3	38
5	44
A, B, C, E	62

Filter Type	B
MERV 8	1 1/8"
MERV 13	2 1/8"



Induced Air Attenuator

UNIT SIZE	A	B
1	36	6 9/16
2	36	7
3	36	8 1/4
5	42	12
A	60 1/8	6 9/16
B	60 1/8	7
C	60 1/8	8 1/4
E	60 1/8	12

